



2023 ROMEO CUP

16 - 18 August 2023 - Campione del Garda – Italy

SAILING INSTRUCTIONS

1. DATE, VENUE AND ORGANISING AUTHORITY

ROMEO CUP will be held at Campione del Garda from 16 to 18 August 2023.
The Organizing Authority for this regatta is Univela Sailing S.S.D.A R.L. in association with 420 Uniqua on behalf of the Italian Sailing Federation (FIV).

2. VENUE

Univela Sailing soc.sport. dil. a R.L.
Via R. Cozzaglio 1- loc. Campione del Garda 25010 Tremosine (BS) ITALY
Tel 0039 0365 791102
Fax 0039 0365 791105
e-mail info@campioneunivela.it - web www.campioneunivela.it

3. RACE COMMITTEE AND JURY

The Race Committee/Jury members will be posted on the Official Notice Board online
<https://www.racingrulesofsailing.org/documents/6894/event?name=romeo-cup>

4. ELIGIBILITY AND LICENCES

4.1 Admitted Class 420

4.2 Admitted boats shall be entitled to race only after completion of registration to the Organizing Committee within 11.00 a.m. of 16/08/2023.

4.3 Italian competitors are entitled to race only if they possess their FIV licenses valid for the current year with medical stamp and Class membership. The licenses shall be submitted to the Regatta Office when registering.

4.4 Foreigner owners shall comply with the rules of their own countries.

4.5 Each boat shall be insured with valid Third-Party liability insurance with a minimum cover per event of 1.500.000,00. Euros or the equivalent in the competitor's national currency. The insurance policy or a valid substitute for it must be given to the Regatta Office when registering.



5. RULES

- 5.1 The regatta will be governed by the rules as defined in the Racing Rules of Sailing (RRS). In the Class Rules, in the Sailing Instructions
- 5.2 When the race management team displays flag “V” with repeated sounds, all official and support boats must monitor channel VHF 71 and carry out any search and rescue instructions.
- 5.3 No Class Rules change will apply
- 5.4 A boat having committed a penalty or having retired as per the R.R.S. rule 44.1, shall make a report on the relevant form and submit it within the time limit for lodging protests.
- 5.5 Advertising is permitted according to Class Rules and as per WS Regulation 20. Boats may be required to display a bow number and advertising chosen and supplied by the OA.
- 5.7 If there is a conflict between languages the English text will take precedence.
- 5.8 The Sailing Instructions take precedence over the Notice of Race. This changes RRS 63.7

6. MEASUREMENT CERTIFICATE AND CONTROLS

Measurement controls will not be held. Measurement controls may be held, at any time, at the discretion of the Race Committee or the Jury.

7 OFFICIAL NOTES

- 7.1 Official notices will be posted on the Official Notice Board. The Official Notice Board will be online at the following url: <https://www.racingrulesofsailing.org/events/6894>
- 7.2 As a communication tool, join the telegram group https://t.me/+B8OdeL_tMEA00WVvk

8 CHANGES TO SAILING INSTRUCTIONS

Any changes to the format or schedule of races will be posted by 08.00 p.m. on the day before it will take effect and any change to the sailing instructions will be posted at least one hour before the scheduled starting time for the first race of the day.

9 SIGNALS MADE ASHORE

- 9.1 Signals made ashore will be displayed on the official pole located near the boat area.
- 9.2 The “AP Flag” displayed ashore means that the race is postponed. The warning signal will be given not less than 30 minutes after the “AP Flag” is lowered ashore.
- 9.3 Flag “L” displayed ashore means that an official notice has been posted.

10 SCHEDULE OF RACES

- 10.1 The warning signal of the first race will be displayed at 01.00 p.m. of 16/08/2023. The warning time of the first race to be sailed in the following days will be written as an Official Notice which will be posted within 08.00 p.m. of the previous day: if not so, the first starting time of the previous day will apply.



10.2 a maximum of 3 races may be sailed in the same day.

10.3 A total of 9 races are scheduled.

The Event is valid with at least one race completed. When fewer than FIVE races (FOUR races) have been completed, a boat's score will be the total of her races score. When FIVE or more races have been completed, a boat's score will be the total of her race score excluding her worst score

10.4 The Low Point System of Appendix 'A' will apply.

10.5 No warning signal will be given after 04.30 p.m. of the last day

11 FORMAT OF RACING

The format of racing will be a single fleet series.

12 CLASS FLAG (WARNING SIGNAL)

For 420 class It will be the "Class Insignia" or the flag "T"

13 COURSES

13.1 The attached diagram A shows the Course, the order in which the marks must be rounded, and on which side each mark must be left.

14 MARKS

- a) The course marks 1 and 2 will be red inflatable buoys.
- c) The starting mark (P) will be yellow inflatable buoy.
- d) The finishing mark will be a smaller red buoy with blue flag leeward of the Race Committee boat.

15. THE START

15.1 The starting signals will be given as per Rule 26.

15.2 The starting line will be between a pole with an orange flag aloft on the committee boat at the starboard end and the yellow buoy at the left end.

15.3 A boat not "starting" 4 minutes after the start signal will be scored, according to the circumstances, DNS or DNC without hearing (this partially modifies RRS A4 and A5).

16 OA BOATS

OA boats will display a yellow flag with a blue letter "S" inside.

17 COURSE CHANGES

No change of course after the start will apply.

18 THE FINISH

The finishing line will be the line between a pole flying a blue flag and the finishing mark with blue flags leeward of the Race Committee Boat.



19 TIME LIMIT

19.1 The time limit and the target time are as follows:

- Time limit course 60 min
- Time limit first mark first 25 min
- Time limit after first 15 min
- Target time 50 min.

Failure to meet the Target Time will not be grounds for redress. This changes RRS 62.1(a).

19.2 Partially changing or integrating rule 32, the Race Committee can abandon the race for any reason.

20 REPLACEMENTS OF CREW OR EQUIPMENT

20.1 Substitution of the crew member will not be allowed without prior written approval of the race committee.

20.2 Substitution of damaged or lost equipment will not be allowed unless approved by the race committee. Request for substitution shall be made to the RC at the first reasonable opportunity.

21 PROTESTS, PENALTIES AND REQUEST FOR REDRESS

21.1 Protests forms are available at the following link

<https://www.racingrulesofsailing.org/documents/6894/event?name=romeo-cup> . Protest and request for redress or reopening shall be delivered there within the appropriate time limit.

21.2 The protest time limit is 60 minutes after the last boat has finished the last race of the day.

21.3 Notices will be posted within 20 minutes of the protest time limit to inform competitors of hearings in which they are parties or named as witness. Hearings will be held in the protest room, located inside the Univela Hostel, and beginning at the time posted. Hearings may be scheduled to begin up to 30 minutes before the end of the protest time.

21.4 Notices of protest by the race committee or protest committee will be posted to inform boats under RRS 61.1.(b).

21.5 A list of boats that have been penalized under Appendix P for breaking Rule 42 RRS will be posted.

21.6 On the last scheduled day of racing a Request for reopening a hearing shall be delivered:

(a) within the protest time limit if the requesting party was informed of the decision on the previous day,(b) no later than 30 minutes after the requesting party was informed of the decision on that day.

21.7 On the last scheduled day of racing a request for redress based on the Jury decision shall be delivered no later than 30 minutes after that decision was posted. This changes Rule 62.2

22 DISCLAIMERS OF LIABILITY

RRS 3 states: 'The responsibility for a boat's decision to participate in a race or to continue to race is hers alone.' By participating in this event each competitor agrees and acknowledges that sailing is a potentially dangerous activity with inherent risks. These risks include strong winds and rough seas, sudden changes in weather, failure of equipment, boat handling errors, poor seamanship by other boats, loss of balance on an unstable platform and fatigue resulting in increased risk of injury. Inherent in the sport of sailing is the risk of permanent, catastrophic injury or death by drowning, trauma, hypothermia or other causes. Any competitor under the age of 18 years old will be required to obtain parental/guardian written consent.



23 SUPPORT AND SPECTATOR BOATS

23.1 Support boats shall be marked in compliance with NOR 14

23.2 Support boats shall not interfere with boats racing or official boats, or create a wake that affects boats racing.

23.3 Support boats shall not be positioned:

(a) closer than 200 meters of any boat racing

(b) within 50 meters of the starting line and marks from the time of the preparatory signal until all boats have left the starting area or the RC signals a postponement, general recall or abandonment

(c) within 50 meters of any marks of the course while boats are in the vicinity and within 50 meters of the finishing line and marks while boats are finishing.

(d) Support boats shall comply with any reasonable request from a race official.

(e) The RC may direct the OA to revoke privileges from any boat or person found to be in breach of SI

24 RADIO COMMUNICATION

A boat shall neither make radio transmission while racing nor receive radio communications not available to all boats, except in an emergency. This restriction also applies to mobile telephones and others electronic devices.

25 TRASH DISPOSAL

As sailors, we seek to protect and restore our waters. Boats shall not intentionally put trash in the water. Trash may be placed aboard support and RC boats. The penalty for breaking RRS 55 is at discretion of the protest committee and may be less than disqualification.

26 PRIZES

Prizes will be awarded in compliance with NOR 11.



Attachment A

COURSE

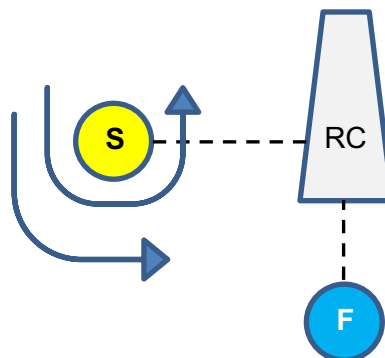
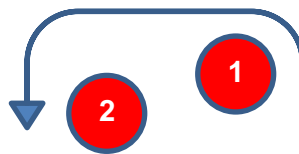
Course Mark to be rounded at LEFT

The S Mark is YELLOW

The Course Marks 1, 2 are RED

The legs and the angles between legs are approximated

COURSE: START - 1 - 2 - S - 1 - 2 - S - FINISH



From the preparatory signal the coaches shall keep clear at least 50 meter behind the starting line .