

SAILING INSTRUCTIONS



FORMULA 18 REGATA NAZIONALE 2025

Campione del Garda, 26–27 July 2025

Organizing Authority

The Organizing Authority is the Italian Sailing Federation (FIV), which delegates the organization to the following affiliated club:

Univela Sailing SSD a r.l.

- Via Riccardo Cozzaglio, 1
- 25010 – Campione del Garda (BS), Italy
- ☎ +39 0365 791105
- ✉ info@univela.org
- 🌐 www.univela.org

Abbreviations

- OA – Organizing Authority
- RC – Race Committee
- PC – Protest Committee
- SI – Sailing Instructions
- RRS – Racing Rules of Sailing 2025–2028
- WS – World Sailing
- ONB – Official Notice Board

1. RULES

As stated in the Notice of Race.

2. CHANGES TO SAILING INSTRUCTIONS

2.1 Any change to the SI will be posted on the online Official Notice Board at [Racing Rules of Sailing](#) no later than one hour before the scheduled warning signal of the first race of the day.

2.2 Changes to the schedule will be posted by 20:00 on the day before they take effect.

3. NOTICES TO COMPETITORS

As per the Notice of Race.

4. CODE OF CONDUCT

4.1 Competitors shall comply with the FIV Sporting Code of Conduct.

4.2 Competitors shall follow all instructions given by race officials and the organizing authority.

4.3 Radio communications not available to all boats are prohibited.

5. SIGNALS MADE ASHORE

5.1 Signals made ashore will be displayed on the signal mast located on the Univela lawn.

5.2 Boats shall not leave their designated area until flag D is displayed.

5.3 The first warning signal will not be made less than 30 minutes after flag D is displayed.

5.4 If AP is displayed ashore, the phrase “1 minute” is replaced with “not less than 30 minutes”. This changes Race Signals.

6. SCHEDULE OF RACES

As per the Notice of Race.

7. CLASS FLAGS

7.1 The class flag will be a white flag with the Formula 18 logo or, if not available, the Golf flag from the International Code of Signals.

8. RACING AREA

8.1 The racing area will be the waters in front of Univela, Campione del Garda (see Addendum A).

9. COURSE

9.1 Windward/leeward course with a spreader mark at the top and a leeward gate (see Addendum B).

9.2 Code Pennant 2 for a short course (2 laps); Pennant 3 for a long course (3 laps).

9.3 The course may be shortened by the RC according to RRS 32.2.

10. MARKS

All marks are red, triangular, robotic buoys.

11. THE START

11.1 Starting procedure will follow RRS 26.

11.2 The orange flag will be displayed at least 5 minutes before the warning signal. This changes Race Signals.

11.3 The starting line will be between an orange flag on the RC vessel and the starting mark.

11.4 A race will be started only if the wind is above 4 knots.

11.5 A boat starting more than 4 minutes after her starting signal will be scored DNS without a hearing. This changes RRS 35, A4, and A5.

12. THE FINISH

12.1 The finishing line will be between a blue flag on the RC vessel and the course side of the finishing mark leeward of the RC boat.

12.2 Boats shall promptly clear the finishing line by at least 50 meters after finishing.

13. PENALTIES

13.1 The Two-Turns Penalty is replaced by a One-Turn Penalty (this changes RRS 44.1).

13.2 Boats must self-report any penalties via the online form before the protest time limit.

14. TIME LIMITS

- Time limit for first boat: 1h10'
- Mark 1 time limit: 15'
- Time limit for finishing after the first boat:
 - 15' (2 laps)
 - 20' (3 laps)

15. PROTESTS AND HEARINGS

15.1 Competitors shall inform the RC of their intention to protest immediately upon finishing. This changes RRS 60.2(a).

15.2 Protests must be submitted online at:

[Protest Form](#)

15.3 Protest time limit: 60 minutes after the last boat finishes.

15.4 Hearing schedules will be posted within 30 minutes of the protest time limit.

16. SCORING

As stated in the Notice of Race.

17. SAFETY REGULATIONS

17.1 Boats retiring must inform the RC either on the water via support boats or onshore via the regatta office (email/WhatsApp acceptable).

17.2 Competitors landing outside the venue must inform the RC.

17.3 Code flag V on the RC boat indicates an emergency. Monitor VHF channel 77.

18. REPLACEMENT OF CREW OR EQUIPMENT

Requires prior approval by the RC.

19. EQUIPMENT INSPECTION

The RC may inspect boats and equipment at any time.

20. OFFICIAL BOATS

- RC Boat: Flag with “R.C.”
- Support Boats: Flag with “S”
- Press Boats: Flag with “P”

21. SUPPORT BOATS

21.1 All support boats must register via the online form:

[Support Boat Registration](#)

22. TRASH DISPOSAL

Trash shall not be thrown overboard. Boats shall hand over waste to official boats.

23. BOAT PARKING

Boats shall remain in their assigned areas.

24. PRIZES

As per the Notice of Race.

25. PRIVACY

By entering the event, competitors agree to the processing of their personal data in accordance with applicable law.

26. DISCLAIMER OF LIABILITY

26.1 As per RRS 3 and Italian Civil Code Art. 2050.

26.2 Univela and the organizers accept no responsibility for damage to persons or property.

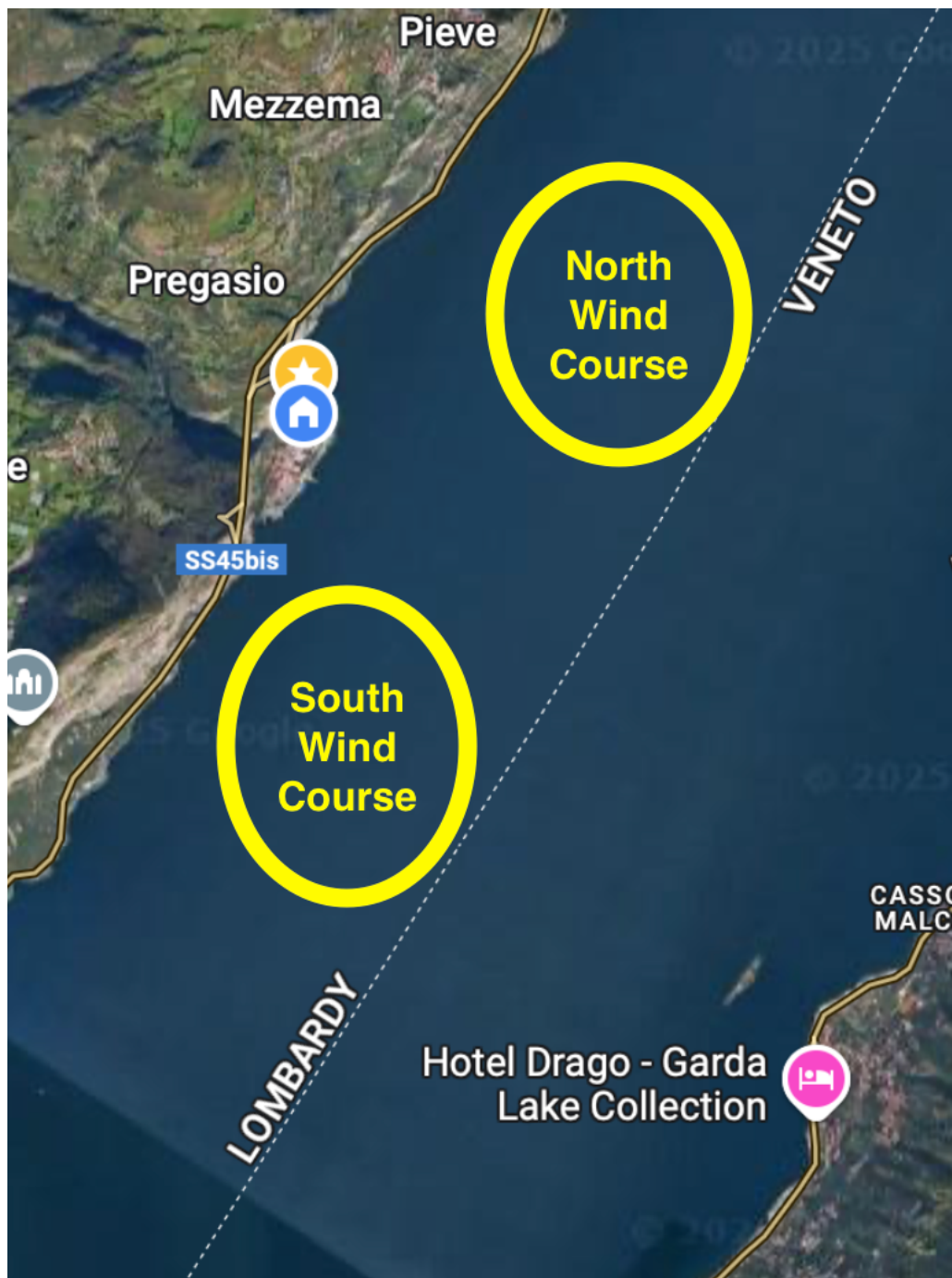


27. INSURANCE

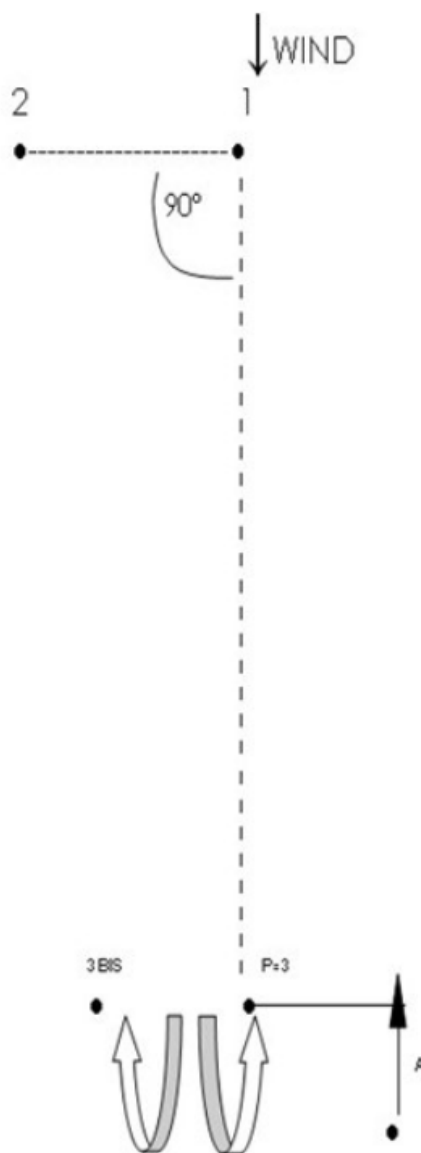
Each boat shall hold third-party liability insurance with a minimum coverage of €1,500,000 per incident.

28. IMAGE RIGHTS

The organizing authority may use photographs and video footage for promotional purposes.

ADDENDUM A

ADDENDUM B



PERCORSI:

PENNELLO 2: P- 1- 2- 3/3BIS- 1- 2- 3- A

PENNELLO 3: P- 1- 2- 3/3BIS- 1- 2- 3/3BIS- 1- 2- 3- A

ADDENDUM C – SUPPORT PERSON VESSEL RULES

B1 – GENERAL RULES

- Applies to all Support Person Vessels (SPVs) under the direction of a Support Person as defined by RRS 2025–2028.
- Valid from 10:30 on 26 July to the end of the event on 27 July.
- SPVs must register at the regatta office before going afloat.
- SPVs must display identification provided by the OA.

B2 – VENUE RULES

- Launch/recovery only in designated areas.
- Trolleys must be stored as instructed.
- When not in use, SPVs must remain moored in assigned areas.

B3 – SAFETY

- VHF radio and towing lines (min. 15 m x 10 mm) required.
- PFDs must be worn at all times by all aboard.
- Kill cord must be attached when the engine is running.
- Comply with Maritime Authority regulations.
- Cooperate with RC at all times, especially during rescue operations.

B4 – GENERAL LIMITATIONS

- SPVs may not permanently deploy equipment or markers in the water.
- Wake must be minimized.
- Support persons are responsible for their vessel's behavior.

B5 – EXCLUSION ZONES

SPVs shall not be:

- Within 100 m of boats racing.
- Within 100 m of the starting line after the preparatory signal.
- Between any boat and a mark or between inside and outside courses.



- Within 100 m of marks when boats are rounding.
- Within 100 m of the finishing line when boats are finishing.
- If exceeding 5 knots, SPVs must stay at least 150 m from any racing boat.